



Richmond

HERITAGE HIGHLIGHTS



This document has been researched, developed, and written by Hawkesbury Library Service. Information may be reproduced for non-commercial purposes with the attribution: Information courtesy of Hawkesbury Library Service on behalf of Hawkesbury City Council.

All images from the Hawkesbury Library Service unless otherwise described.

On 6 December 1810, the town of Richmond was one of five selected by Governor Lachlan Macquarie to provide safe residences and storage of produce for farmers who had already settled on flood prone land on the banks of the Hawkesbury–Nepean River. Richmond was named by Macquarie for its resemblance to its English counterpart...‘from its beautiful situation and as corresponding with that of its district’.

In 1811, the township was surveyed by James Meehan, who marked out the principal streets, town lots, market square (now Richmond Park) and the church precinct. Enormous expansion to the south occurred in 1966 with the Hobartville housing subdivision taking over the outer pastures of the Hobartville Stud.

Although the perimeter of the town has now spread beyond to Hobartville in the south-west, with some development to the north-east, the original layout is still very much as Macquarie envisaged.

This brochure includes many privately owned buildings which aren't open to the public and may be viewed from the street only.

Richmond

HERITAGE HIGHLIGHTS

1 **Richmond Park** (originally the Market Square) Windsor Street

On 8 January 1811, the Governor and Mrs Macquarie, accompanied by a surveyor, marked out 'The Great Square' and the principal streets of the new township of Richmond. By the 1860s it had become a haven for wandering stock and was considered for subdivision into small housing allotments. Thankfully the area was dedicated as a reserve for public recreation in 1868, and in the late 1870s a major tree planting program commenced including Australian and exotic species, many of these are still growing today.

Within the park note The Pavilion, a grandstand overlooking the oval, constructed by local building contractor, councillor and author Samuel Boughton in 1884. The Richmond Park sign was erected in his honour by his family following his death in 1911. Also see the Fountain, now facing Windsor Street, commemorating the turning on of the Richmond Water Supply in October 1892. The day of the opening was ironically one of torrential rain. Originally installed opposite the railway station, the remnants of the original fountain were removed and a replica installed in 2012 in the current location.



*Pavilion, Richmond Park, Richmond
by Margaret Chadwick*

2 **Former Richmond Post Office** 286 Windsor Street

Mail was delivered to Richmond three times per week from 1830 by the local constable on a voluntary basis. Richmond's first post office was established in 1844, with a telegraph office later operating from the railway station. In about 1870, the residents of Richmond petitioned for a new post office to be built and in 1875 the original single storied building, designed by Colonial Architect's Office under James Barnet, opened.

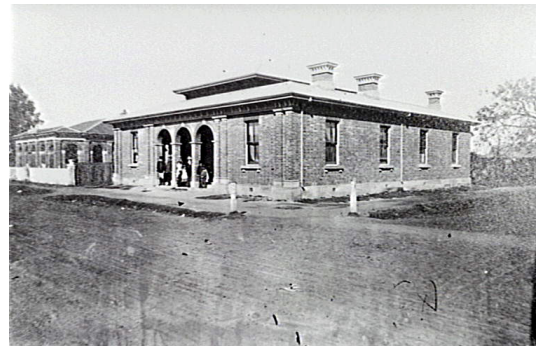
In 1888, the second storey and balustrade was added by local contractor Samuel Boughton, at a cost of £869.



Post Office, Richmond 1902 by H Stevens

3 **Richmond Court House & Police Station** 288 Windsor Street

Designed by James Barnet in 1877, note the similarity between this and the adjacent former post office. It replaced The Watch-house built by William Cox in 1827. The Watch-house was a four roomed structure with a detached kitchen, and one room barred and secure for the custody of prisoners. The rear of the site was set aside for the first stock pound in the Town. The court house is still in use, however the Police is now located in Windsor.



*Court House & Police Station, Richmond 1879
(State Library of NSW)*

4 **Former Commercial Banking Company of Sydney Ltd (CBC)** 294 Windsor Street

From the 1870s to the early 1900s many branches of the CBC bank were designed by the Sydney firm of architects Mansfield Bros, including those in Richmond and Windsor. The Richmond Branch was completed in 1880 and included banking chamber, stables, and a residence on the first floor. In 1981 the CBC Ltd merged with the National Commercial Banking Corporation of Australia Ltd (now NAB) and in subsequent years the branch was closed.



*Former CBC Bank, Richmond 1960
D G Bowd Collection*

5 **St Andrews Uniting Church Group** 25 West Market Street

Originally constructed as a Free Presbyterian Church in 1854, St Andrews was built on land donated by George Bowman. He also funded most of the building costs, including the tower erected in 1877 and the clock installed after his death in 1878. The longest serving minister of the church was Rev. James Cameron who served as incumbent for 49 years. Restoration work was undertaken in 1987, took five years to complete and by 1992 St Andrews was reopened for worship. The adjacent Sunday School Hall was built in 1860.



St Andrew's Presbyterian Church, Richmond

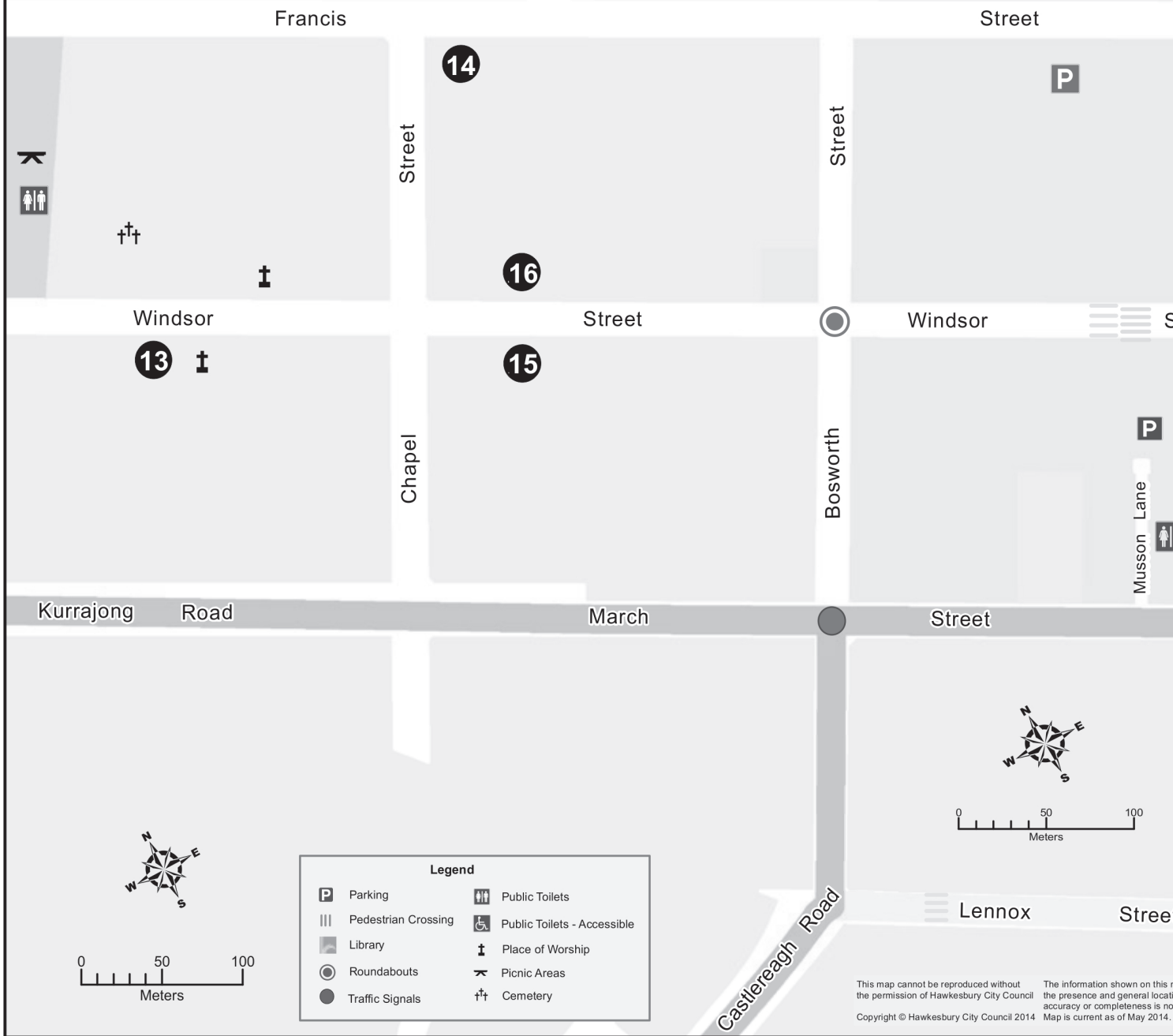
6 **Eulabah** 27 West Market Street

Designed in the late Jacobean style in 1881 by Sydney architects Mansfield Bros, this was the home of Rev. James Cameron and his wife Eliza Bowman. Rev. Cameron made a significant contribution to the development of the town of Richmond as well as writing an important history of the Presbyterian Church. Rev. Cameron died in 1905 and the home was sold to George Woodhill. In 1913, after fundraising events such as concerts and balls, the home began a new life as a district hospital.



Eulabah (Burch Collection / Harold Derwent Burch)

Richmond Heritage Highlights

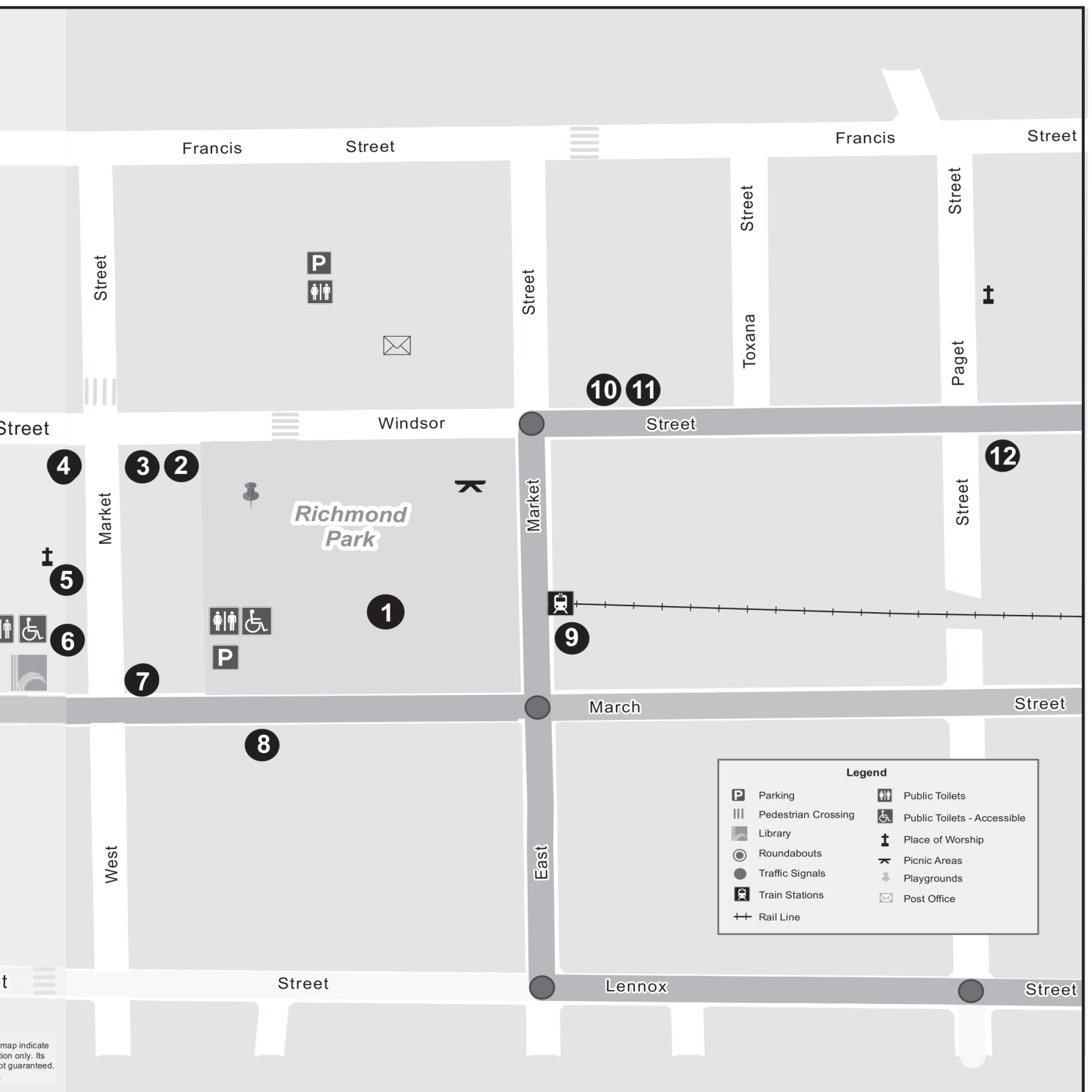


7 Richmond School of Arts and Literary Institute 26 West Market Street

Schools of Arts and Mechanics' institutes were established in NSW during the 19th and early 20th centuries to provide educational opportunities for working men. The Richmond Literary Institute was established in 1861 with founding president George Bowman contributing £100 towards the construction of the School of Arts building. The opening took place on 27 August 1866 by (Sir) Henry Parkes (later Premier of NSW and campaigner for education reforms).



School of Arts, Richmond 1879
(State Library of NSW)



**8 Price's House
120 March Street**

William Price (1792–1877) arrived in NSW as a convict in 1816. By 1822, just six years after his arrival, he had purchased an acre of land from William Bowman and by 1827 had constructed this substantial two storey home for his family. Price also ran a post office and an undertaker's business from this site. His son, William Thomas, established a blacksmithing and wheelwright business at the rear of the house. The home was occupied by succeeding generations of the Price family.



*120 March Street, Richmond 1979
by Margaret Chadwick*

9 Richmond Railway Station East Market Street

As early as 1856, local residents petitioned the NSW government for an extension of the railway from Blacktown to the Hawkesbury. In 1861 a sum of £60,000 was approved to extend the line from Blacktown to Richmond, opening on 29 November 1864. The first train service from Sydney took place in 1893 but it was not until 1991 that the line was electrified from Riverstone to Richmond. The current station building was constructed in 1881.



Richmond Railway Station, Richmond

10 Toxana 147 Windsor Street

William and Elizabeth Bowman built this house c.1842 on land originally granted to John Bowman. William was a successful pastoralist, philanthropist and in 1843 was the first Hawkesbury representative to be elected to the NSW Legislative Council. After Elizabeth's death in 1886, the R. James Cameron purchased Toxana from the Bowman estate. It was used as a residence for the local minister until 1891 when it was leased as accommodation for the first 20 students enrolled at the newly established Hawkesbury Agricultural College.



Toxana, Richmond

11 Regent Theatre 145 Windsor Street

First opening in 1935 with 'My Heart is Calling', the Regent was designed by Moore & Dyer in the Art Deco style with Spanish Mission influence, and is similar to the Parramatta Roxy. The theatre was bought by TV personality Mike Walsh in 1976 with a grand opening celebration featuring 'Gone With The Wind' and a champagne supper afterwards at Hobartville Estate.



*Regent Theatre, Richmond
by Margaret Chadwick*

12 Andrew Town House 122 Windsor Street

The building known as Andrew Town House because of its association with Andrew Town (1840-1890), horse breeder and land owner of Hobartville Estate, has had a very colourful history.

Only a portion of the original building, an inn built by Town's grandfather John Town, survives. The substantial two storey building built around 1828 was named by Town as The Kings Head, then The George IV, and later was known as The Fat Sheep during the time of William Onus.

The Georgian style two storey structure is a later addition by Andrew Town during the 1860s. Horse races were said to have been held regularly from Town's house to the Black Horse Inn on the corner of Bosworth Street, a distance of 1500 metres.



*Windsor Street, Richmond 1879
(State Library of NSW)*

13 St. Peter's Anglican Church and Cemetery
384 Windsor Street

Designed by architect Francis Clarke in the Colonial Georgian style, the church was consecrated in 1841. The bricks were made locally by hand, varying in size and shape. The iron palisade front fence and memorial gates were commissioned to celebrate the jubilee of the consecration in 1891, when the beautiful window above the altar was presented by Joseph Onus. The Rectory was completed in 1848.

Opposite the church lies the cemetery which was in use by 1811. Notable citizens have been interred here including members of the Cox, Bowman, Pitt, Onus, Town, Sly and Boughton families. Famous women such as Margaret Catchpole and Louisa Calvert (née Atkinson) are also buried here.



St Peters Anglican Church and Cemetery

14 Josieville
2 Chapel Street

This elegant Georgian style home was commenced in the 1830s by Joseph Onus senior and later became the home of Joseph Onus junior, who added the top storey Victorian style verandah with iron lace and French doors in the 1870s. The home was also occupied by two of the ministers of St Peters church prior to the completion of the Rectory in 1848. As you return to Windsor Street, note the avenue of London Plane trees, planted by George Guest between 1885 and 1894.



Josieville, corner of Francis & Chapel Street, Richmond by Margaret Chadwick

15 Bowman Cottage
368 Windsor Street

This building from the 1820's, is a rare surviving example of brick-nog construction. This involves constructing a framework of timber posts filled in with courses of brickwork. It commenced as a flood safe refuge for district police constable James Blackman, then was sold unfinished to George Bowman, first mayor of Richmond, where he lived with his wife and 11 children until his death in 1878.



Bowman Cottage

16 Eltham
317 Windsor Street

Occupation of this Georgian townhouse dates from the 1830s when Thomas Eather opened the Union Inn here. Owners of the property have included Thomas and John Tebbutt, George Guest and Andrew Town.

In 1888, Town sold the building to the Australian Joint Stock Bank, renovations were made and the branch operated here until 1891. In 1895, the premises were bought by Francis Vindin who replaced the two shop windows at the front with a bay window. It then became the home of George Wood and has been used as a family home until recently.



Windsor Street, Richmond (State Library of NSW)



Andrew Town (1840–1890) was the great grandson of a convict transported to Australia in 1800 to serve a life sentence. Marrying Emma Susannah Onus in 1863, he established Hobartville Stud, one of the most successful horse studs in Australia. The pinnacle of his career is said to have been his success with his winning entry, Grand Flaneur, in the 1880 Melbourne Cup.

Andrew Town (1840–1890) Deborah Foster Collection

Founder of The Onus Family, Joseph Onus (1781–1834), was transported in 1803 under a life sentence and began farming on 25 acres on the river flats at Richmond. The family owned several homes of distinction in Richmond including Josieville and Clear Oaks. Joseph's son and grandson (both named Joseph) both attained position of Mayor on the council of Richmond.

The Bowman Family was one of the earliest of the free settlers in the colony. George Bowman (1795–1878) arrived when he was three years old and his huge contribution to Richmond can be seen in its public buildings and institutions, many of which were established with his financial donations and political influence.

The Reverend James Cameron (1827–1905), Presbyterian clergyman, educationalist and historian, also made a significant contribution to the development of Richmond. Married to Eliza, daughter of George and Eliza Bowman, he was the longest serving clergyman for 49 years at St Andrews Church.



Margaret Catchpole (1762–1819), horse thief, convict and pioneer, was sentenced to transportation for life, arriving in Sydney in 1801. Her letters, include details of early Hawkesbury floods, the countryside, the wildlife and Aboriginal people. Pardoned in 1814, she spent her later years keeping a small store at Richmond, working as a midwife and helping others. She is buried in an unmarked grave at St Peters Cemetary, Richmond.

Courtesy State Library of NSW

The City of Hawkesbury is predominantly situated on Dharug Country and includes Darkinjung Country in the Colo Heights and St Albans areas. Hawkesbury City Council recognises and acknowledges the Dharug and Darkinjung Peoples as the Traditional Custodians of this land. We also recognise that Country is an all-encompassing term for Dharug and Darkinjung People containing complex ideas about law, place, custom, language, spiritual belief, cultural practice, family and identity. Hawkesbury City Council pays respect to all Dharug and Darkinjung Elders past and present and acknowledges their continuing contribution to the life of this City and the region.



For further information call the

Hawkesbury Visitor Information Centre

(opposite Richmond RAAF Base)

328 Hawkesbury Valley Way, Richmond NSW 2753
(02) 4560 4620 | **Open 7 days.**

Managed by Hawkesbury City Council

www.discoverthehawkesbury.com.au

© Hawkesbury City Council, March 2025